



The Hamlet, Chettisham, Ely, CB6 1SB

**CHEFFINS**

## The Hamlet

Chettisham, Ely,  
CB6 1SB

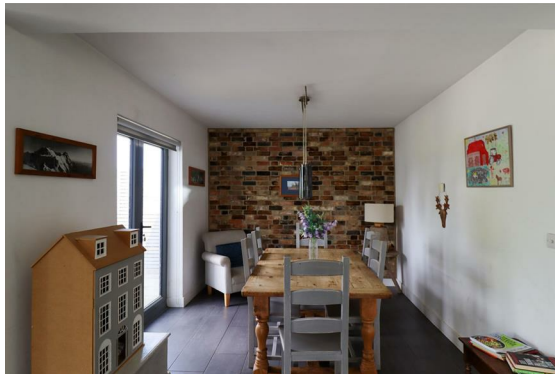
- Available: 04/06/2026
- Half an acre plot
- Far reaching views
- Solar Panels

A substantial 4 bedroom detached house situated in a plot of approximately half an acre with far reaching views. Gas central heating, solar panels and rooms have hard wired internet access. Accommodation comprises hall, kitchen/dining/living area, utility room, family room, cloakroom, 4 bedrooms (all with en-suite), garden, garage and driveway. Available: 04/06/2026. Deposit: £3,461. Holding deposit: £692. Council tax band: F. EPC: C. The marketing photographs were taken prior to the start of the current tenancy.



£3,000 PCM





## LOCATION

Chettisham is a hamlet situated on the outskirts of Ely. Ely is an historic Cathedral City which provides an excellent range of shopping facilities, schools catering for all ages and various sporting and social activities including the recently opened Ely Leisure Village incorporating multi-screen cinema and restaurants. The main A10 road at Ely provides access to Cambridge which in turn links with the A14 and M11 motorway to London. Ely also has a mainline station which provides an electrified rail service to Cambridge and London.

## HALL

With porcelain tiled floor, a range of full height storage cupboards, vaulted ceiling, plinth lighting.

## KITCHEN/LIVING/DINING ROOM

Kitchen with Silestone work surfaces and breakfast bar, hob, extractor, integrated double oven, microwave, fridge/freezer and dishwasher. Porcelain tiled floor, freestanding wood burning stove, bi-fold & French doors on to the rear terrace.

## UTILITY ROOM

With plumbing for washing machine and space for tumble drier.

## FAMILY ROOM

With porcelain tiled floor.

## CLOAKROOM

With porcelain tiled floor.

## BEDROOM

With porcelain tiled floor.

## EN-SUITE

With porcelain tiled floor, bath with shower attachment.

## GALLERIED LANDING

With vaulted ceiling, glazed screens overlooking the hall, storage cupboard.

## BEDROOM

With vaulted ceiling, French doors on to glazed Juliet balcony.

## DRESSING AREA

With a range of fitted wardrobes.

## EN-SUITE

With vaulted ceiling, walk-in shower cubicle and "his & hers" wash basins.

## SEPARATE WC

With porcelain tiled floor.

## BEDROOM

With vaulted ceiling and French doors on to glazed Juliet balcony.

## EN-SUITE

With shower cubicle.

## BEDROOM

With vaulted ceiling and French doors on to glazed Juliet balcony.

## EN-SUITE

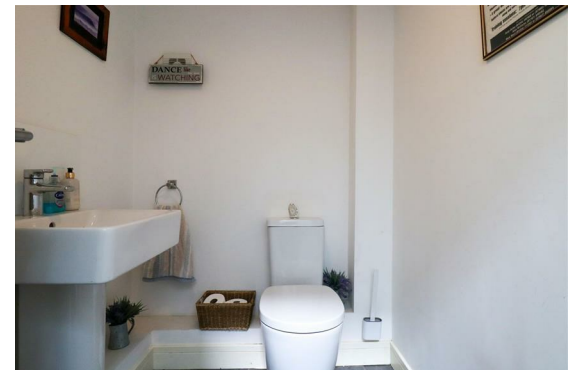
With shower cubicle.

## OUTSIDE

Approximately half an acre plot with 28' garage and driveway.

## LETTING AGENTS NOTES

For more information on this property please refer to the Material Information brochure on our Website.







TO MY MOM  
I hugged this SOFT PILLOW  
I squeezed it REALLY TIGHT  
I filled it with MY WISHES  
HOPE LOVE AND LIGHT  
So when you're feeling  
Just like I do







Energy Efficiency Rating		
	Current	Potential
Very energy efficient - lower running costs		
(92 plus) <b>A</b>		
(81-91) <b>B</b>	<b>82</b>	<b>85</b>
(69-80) <b>C</b>		
(55-68) <b>D</b>		
(39-54) <b>E</b>		
(21-38) <b>F</b>		
(1-20) <b>G</b>		
Not energy efficient - higher running costs		
<b>England &amp; Wales</b>	EU Directive 2002/91/EC	